



**Area :** Tersefanou - Larnaca  
**Construction status:** Completed

# Cliffside Gardens

## *Description*

An exclusive development of only 14 luxury 1 and 2 bedroom apartments. Each apartment is finished to the highest standard and includes; parquet floors, floor to ceiling fitted wardrobes, and the latest state of the art security intercom systems.

Uniquely designed communal areas are served by stairways and an air conditioned, hydraulic elevator.

Within the gated community, each apartment has allocated parking, storage facilities and changing facilities for use with the generously sized communal pool.

Set in a perfectly tranquil location, this idyllic setting further benefits from beautifully landscaped areas which complete the exterior living areas to the same superb high standard.



## *Specifications*

- Stunning location with panoramic views of the Larnaca coastline
- Set on one of the highest points of Tersefanou village with view of beautiful deep valley allowing for unobstructed views of the mountains and Larnaca coastline
- Only 4km from Larnaca International Airport
- 15 minutes drive to Larnaca centre
- Within close proximity to the traditional villages of Kiti, Pervolia and Meneou
- Easy access to all major highways linking Larnaca to the rest of Cyprus
- An exclusive development of only 14 luxury apartments
- Private parking in a secure gated community
- Storage room
- Communal pool
- Changing facilities
- Storage room
- 10 year structural guarantee
- Beneficial mortgage terms
- Excellent investment opportunity
- Situated only 0.5km from the proposed golf course
- Up to 20 days per annum, complimentary accommodation (bed and breakfast at the Livadhiotis City Hotel) for inspection trips during construction



*Unequaled finishes*  
Unequaled finishes







# Luxury Living





# Location

Location

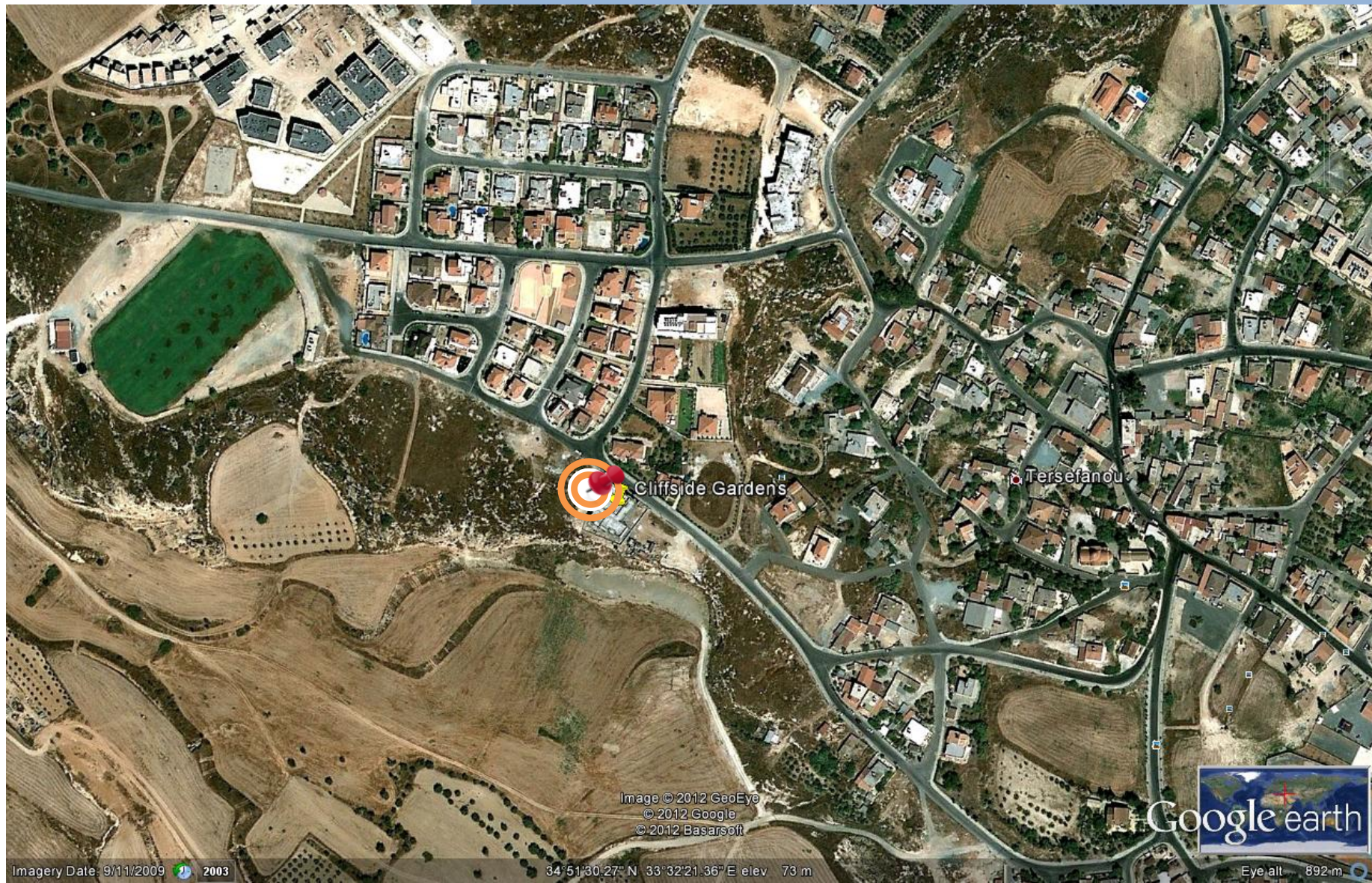


Image © 2012 GeoEye  
© 2012 Google  
© 2012 Basarsoft

