



Area : Livadhia - Larnaca
Completion Date: October 2006

SunPath Complex

Description

Sunpath Complex is a 3 storey, 5 block development comprising 50 units. The project has a selection of 1 and 2 bedroom apartments with 2 bedroom penthouse apartments.

These apartments are set in a beautiful, tranquil location with stunning mountain and sea views in all directions. A gated community, with a large communal pool all set within mature landscaped gardens and only 900m from the beach.

Sunpath Complex is located in the Larnaca suburb of Livadhia and is a 10 minute drive into the centre of Larnaca.



Specifications

- Communal Pool
- 900m from the beach
- Easy access to major highways
- Landscaped Gardens
- Gated community
- Sea views
- Storage & Covered Parking



*Unequaled
finishes*

Unsurpassed Views







High Values

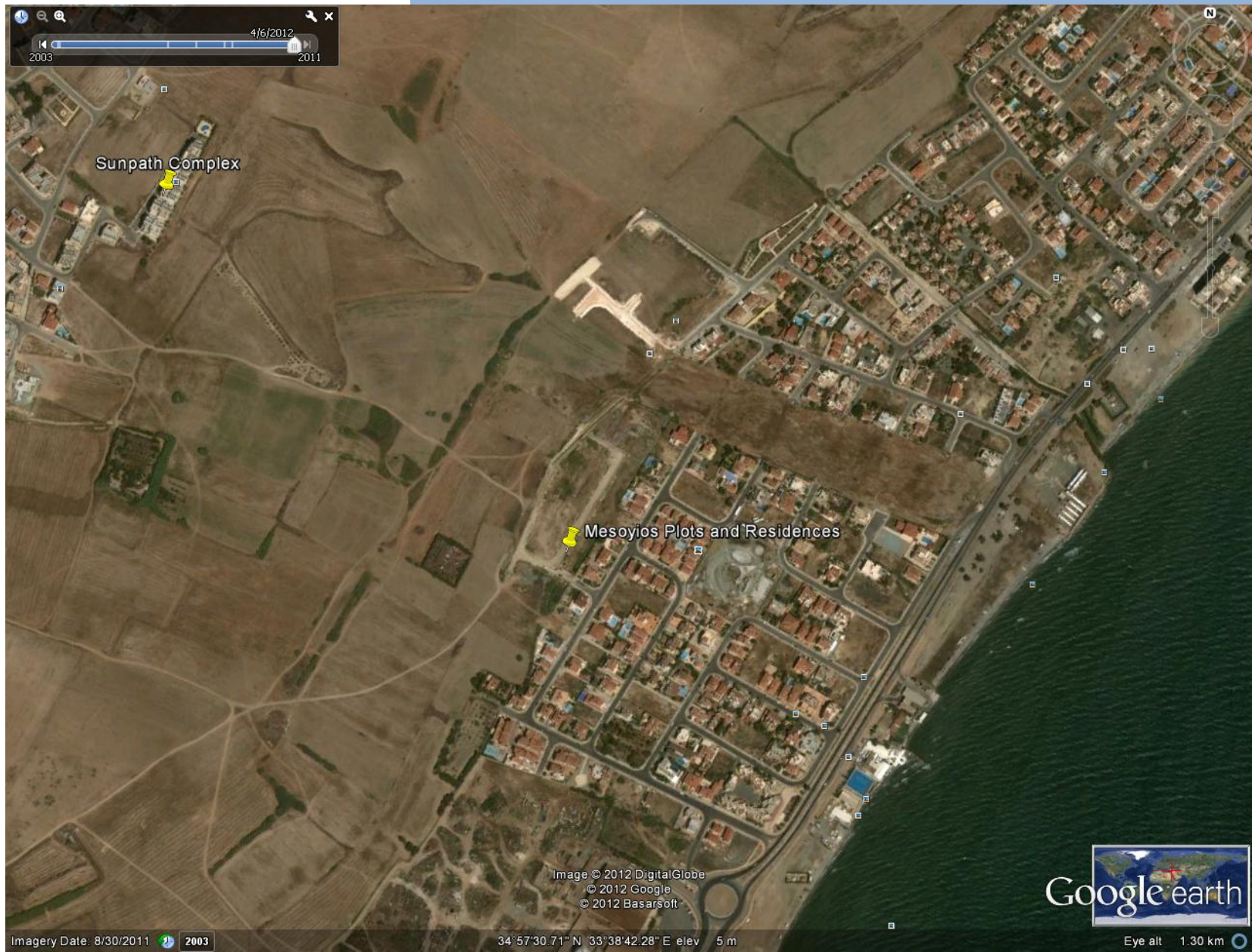


finished apartments





Location



Floor Plans

Unit 12/202





Invest in your future
Invest in your future