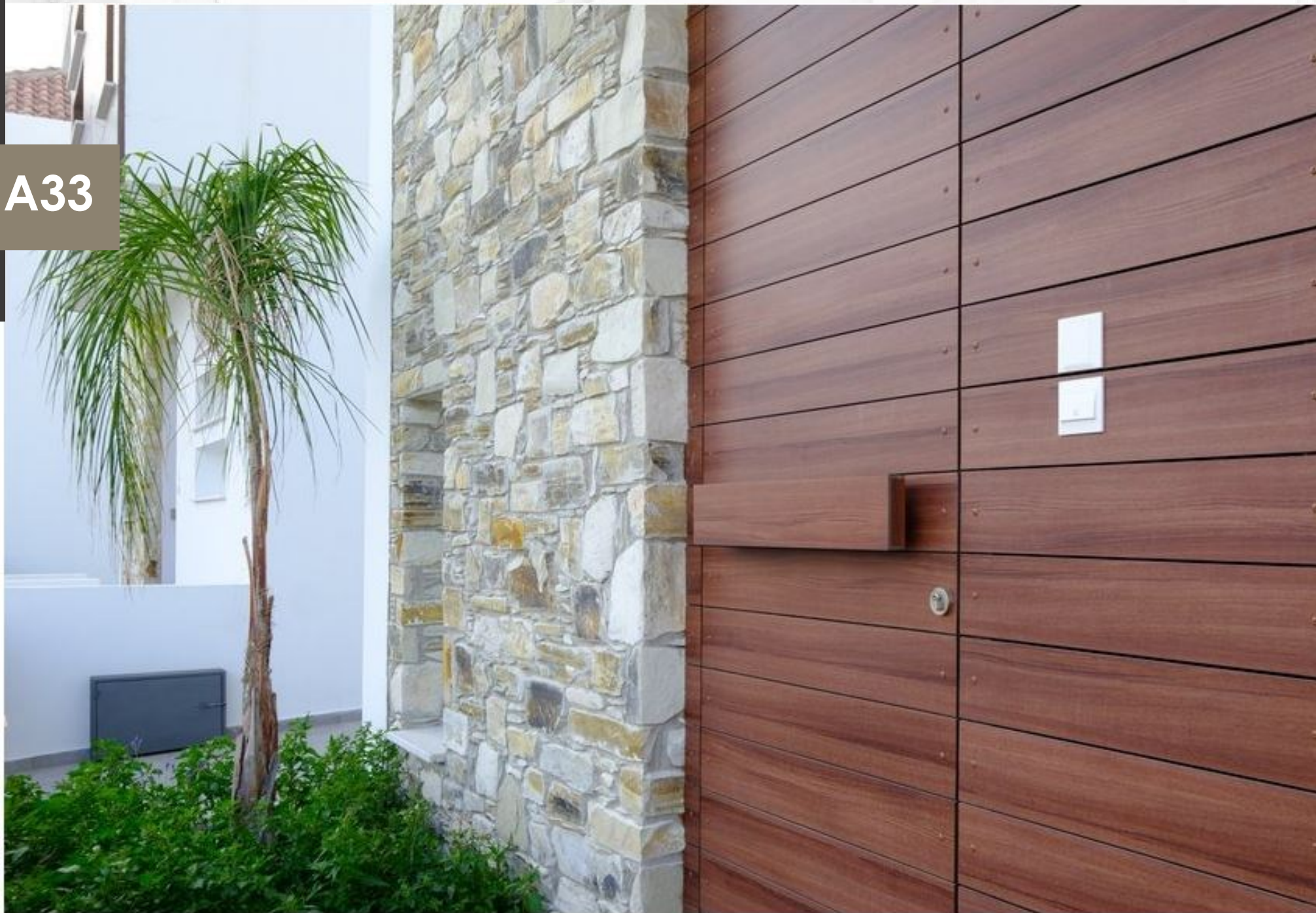


HOUSES FOR SALE

REF: **A33**



HORIZON HEIGHTS RESIDENCES
DROMOLAXIA, LARNAKA – CYPRUS



LARNACA



EUROPEAN CAPITAL OF CULTURE FOR 2030

Larnaca has officially been selected as the European Capital of Culture for 2030, marking an important milestone for the city and for Cyprus as a whole.

The decision was made by the European Commission after Larnaca's successful bid, which stood out among the competing proposals, including one from Limassol.

As part of this recognition, Larnaca will also receive the Melina Mercouri Prize, a €1.5 million award from the EU's Creative Europe programme, supporting the city's cultural preparations.

In 2030, Larnaca will share the title with Leuven in Belgium and Nikšić in Montenegro, placing the city firmly on Europe's cultural map.



LARNACA

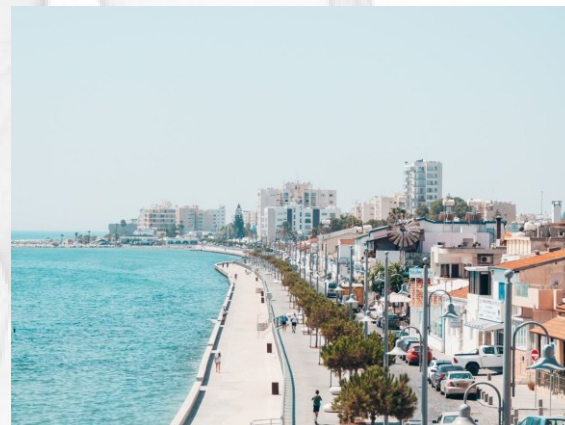
EUROPEAN CAPITAL OF CULTURE FOR 2030

VISION AND IMPACT ON THE CITY

Larnaca's vision for 2030 focuses on using culture as a tool to transform the city and strengthen its identity. The project aims to turn Larnaca from a mainly service-based city into a lively cultural hub, where art, creativity, and community participation play a central role. The programme includes the wider Larnaca region and places strong emphasis on inclusion, sustainability, and cultural democracy, ensuring that local residents are actively involved. In the long term, the title is expected to boost tourism, support creative industries, and leave a lasting cultural and social legacy for the city and its people.

Why buy in Larnaca now:

- Strong property value growth potential
- European-standard urban planning and infrastructure
- High quality of life near the sea
- Growing demand from international buyers and investors
- Safe, stable environment within the European Union



DESCRIPTION

Houses Available for sale
Each Property Features



3 & 4
Bedrooms



3 & 4
Bathrooms



2
Parking



Close to
the beach



Prime
Location



Swimming Pool
Optional

- **LARGE PLOT**
- **ENERGY EFFICIENCY B**
- **DETACHED HOUSES**

Not more than 10 minutes drive from Larnaca town centre, these residences are located in a quiet residential area.

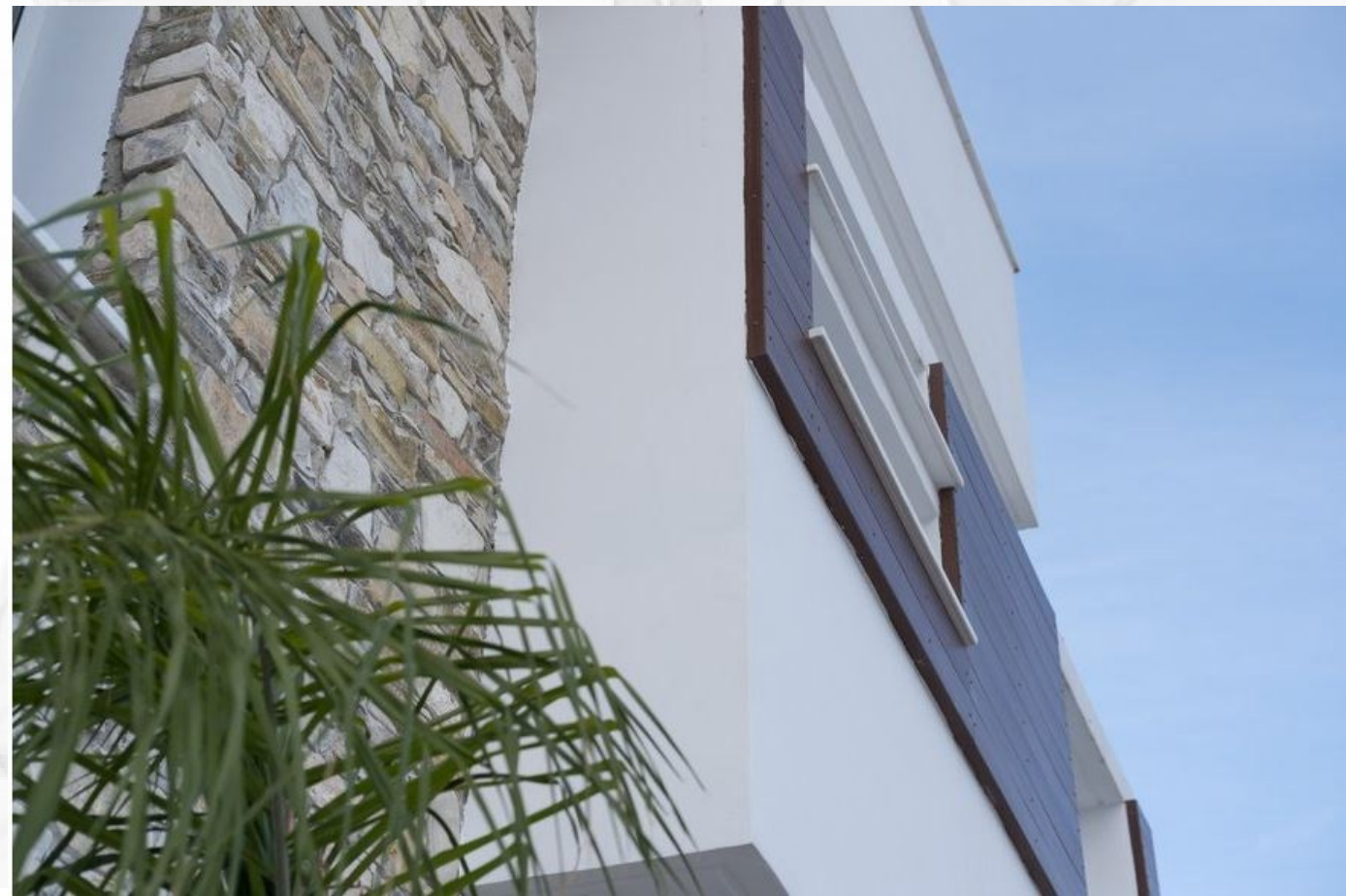
Great luxury options are featured comprising open plan living areas which can be modified to suit the purchases needs, kitchen/dining area, guest toilet, master bedroom with en-suite and main bathroom.

The project uses a unique combination of glass, stone and timber to appeal to the new home buyer.

The project also benefits from the beaches of Meneou, Kiti, Pervolia, and Larnaca town, and close range links to highways connecting to all major cities in Cyprus.



Modern Architecture





LOCATION

LARNACA
CITY
CENTER

LARNACA
SALT LAKE

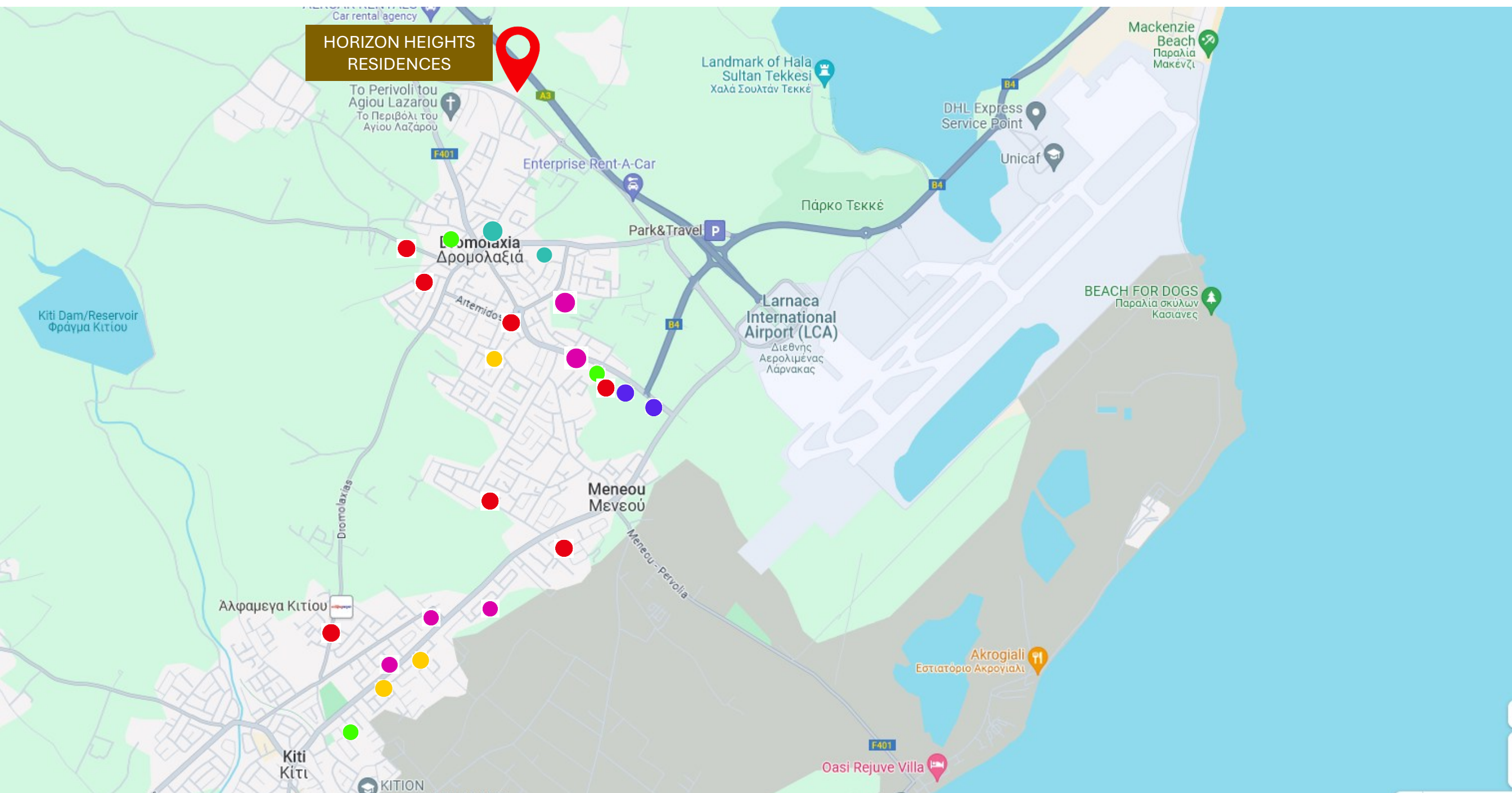
MAKENZY
BEACH

LARNACA'S
INTERNATIONAL
AIRPORT

TOWARDS AYIA
NAPA &
NICOSIA
HIGHWAY



LOCATION ON MAP



FOOD SERVICES



SCHOOL



CAFÉ/RESTAURANTS



PHARMACY



BAKERY



SUPERMARKET

LOCATION



LARNACA'S
INTERNATIONAL
AIRPORT

ORGANISED
BEACHES

DROMOLAXIA
CENTER

KITI
PERVOLIA

TOWARDS AYIA
NAPA &
NICOSIA
HIGHWAY



HORIZON HEIGHTS
RESIDENCES

LOCATION

DETAILS OF LOCATION

Larnaka town is also significant for both Christians and Moslems. The most revered monuments of the two are included in the main attractions of the city: the Church of Agios Lazaros (Saint Lazarus), the patron saint of the town who Jesus resurrected and held dear as a friend; and the mosque of Hala Sultan – an important place of pilgrimage for Moslems that is embraced by the Salt Lake.

In the same area, the famous Salt Lake fills with flocks of vibrant pink flamingos in the winter months and attracts visitors for its natural beauty and ecological value, offering a nature trail in the heart of the city.

[CLICK HERE](#) 

 11 minute [Click link](#)



SAINT LAZARUS CHURCH & SQUARE

 6 minute [Click link](#)



HALA SULTAN TEKKE



LARNAKA SALT LAKE

 12 minute [Click link](#)



The METROPOLIS Mall of Larnaca, is a fully enclosed, single-level, climate controlled Shopping and Lifestyle Centre. Focused on offering customers the convenience of having all their needs met in one location, it will cater for families, kids, teens and adults alike. With a full retail offering, including a supermarket, major fashion retailers, branded and independent shops, services, entertainment, food court with modern restaurants and cafes, kids play areas and free WiFi, it will be Larnaca's ultimate lifestyle and shopping metropolis! With excellent access, location and visibility, METROPOLIS Mall @ Larnaca is well suited to cater for the entire catchment area within a 30km radius.



LOCATION

LARNACA'S INTERNATIONAL AIRPORT



5 minute

[Click here](#)



Larnaca International Airport is **Cyprus' main international gateway and the larger of the country's two commercial airports**, the other being Paphos International Airport on the island's southwestern coast. The airport has one primary passenger terminal.



FINIKOUDES BEACH

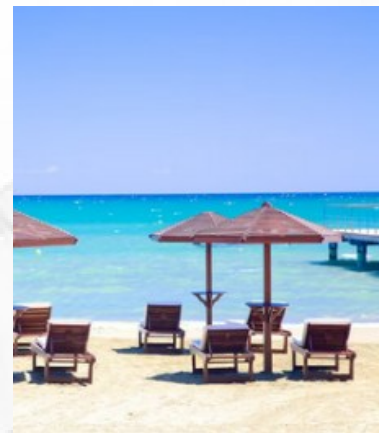


15 minute

[Click link](#)



“Finikoudes” is **the name given to the main strip of sand on the eastern coast of Larnaca**. It translates literally to “small palm trees” referring to the line of palm trees planted back in 1922. It is considered one of the most famous beaches of southern Cyprus, around 600m long with fine grey sand.



MACKENZIE BEACH



5 minute

[Click here](#)

Mackenzie beach is located about 10 minutes from Dromolaxia in the city of Larnaca. More specifically it is close to the Larnaca Airport, therefore you can see the planes taking off and landing while you swim. The waters in Mackenzie Beach are usually calm thanks to its sheltered position.



MACKENZIE BEACH



5 minute

[Click here](#)


ammos
MAKENZY BEACH



EDUCATION

[Click here](#)



 15 minute

AAL

PHONE

+357 24815400

FAX

+357 24651046

EMAIL

info@academy.ac.cy



www.Academy.ac.cy

As a non-profit institution, this school is committed to delivering a holistic educational experience that begins in the classroom and extends far beyond it. At the heart of the school's philosophy is its motto "to grow and to serve" which embodies the true ethos and culture of our learning environment.

As the school notes, students grow intellectually, emotionally, socially and morally, and are encouraged to serve their community actively and generously. The school ethos is reinforced in their unique management structure; a private, non-elitist, co-educational independent school that is uniquely run by its own graduates.



EDUCATION

[Click here](#)



PASCAL
Private English School

LARNAKA

Address: 2, Polytechniou Street
7103 Aradippou

Tel: +357 22509300

Fax: +357 22509530

Email: larnaka.info@pascal.ac.cy

 9 minute

www.pascal.ac.cy

PASCAL Education aims to offer education that develops intellectually as well as physically active and creative young individuals who will leave school with an understanding that learning is a lifelong process in which they are active participants. Individuals who are able, with their acquired critical thinking skills, compassion and knowledge to work towards creating a better world in which awareness and understanding of different cultures is a prerequisite for progress and success.

The graduates secure placements at top UK, other European, USA and other worldwide universities based on the Apolytirion only or the Apolytirion with other secondary school leaving qualifications (GCE A Levels/IAL or The Diploma of the International Baccalaureate/Diploma Programme Courses Results).



NEW PHASE



SUPERMARKET

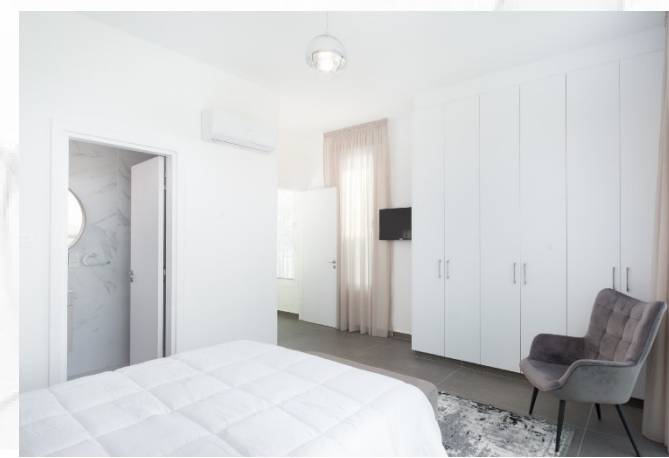
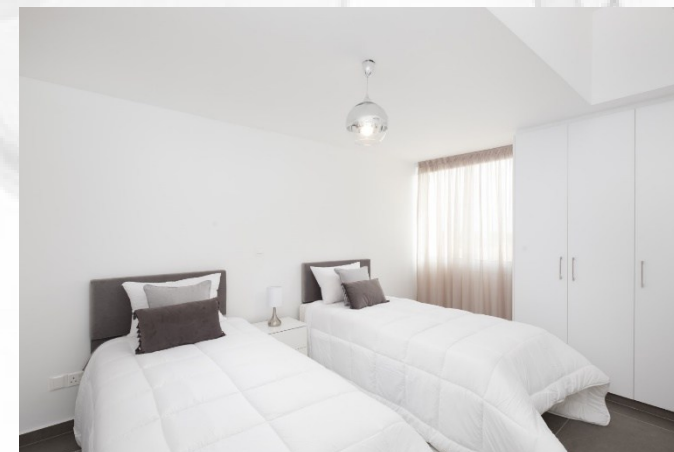
NEW PHASE /
UNDER
CONSTRUCTION

LIVING ROOM AREA



KITCHEN & DINING STORIES





THE BEDROOMS

Spacious and modern
With neutral colours and
patterns for a
calm and relaxing environment

Modern minimal furniture

Maximum space usage

Large and functional wardrobes

Master bedroom has en-suite
bathroom

EXTERNAL APPEARANCE

- The project uses a unique combination of glass, stone and timber to appeal to the new home buyer.
- Big openings with glass doors opening to spacious verandas and gardens.
- Emphasis of rectangular forms and horizontal and vertical lines





Tel.: +357 24 82 38 88 | Fax: +357 24 62 42 22
panikos@LivadhiotisDevelopers.com
50 Nikolaou Rossou Str., P.O.Box 42800 ,
6021 Larnaka - Cyprus

Disclaimer:

The information contained in this promotional material is for illustration purposes only and is subject to change. Statements, figures, calculations, plans, images and representations are indicative only. Images may include sketches, artist impressions and computer generated images. Changes may be made during the further planning or development stages of any development and dimensions, fittings, finishes, ongoing costs and specifications and representations are subject to change without notice. Whilst all reasonable care has been taken in providing this information the developer and its related companies and their representatives, consultants and agents accept no responsibility for the accuracy of any information contained herein or for any action taken in reliance thereon by any party whether purchaser potential purchaser or otherwise.